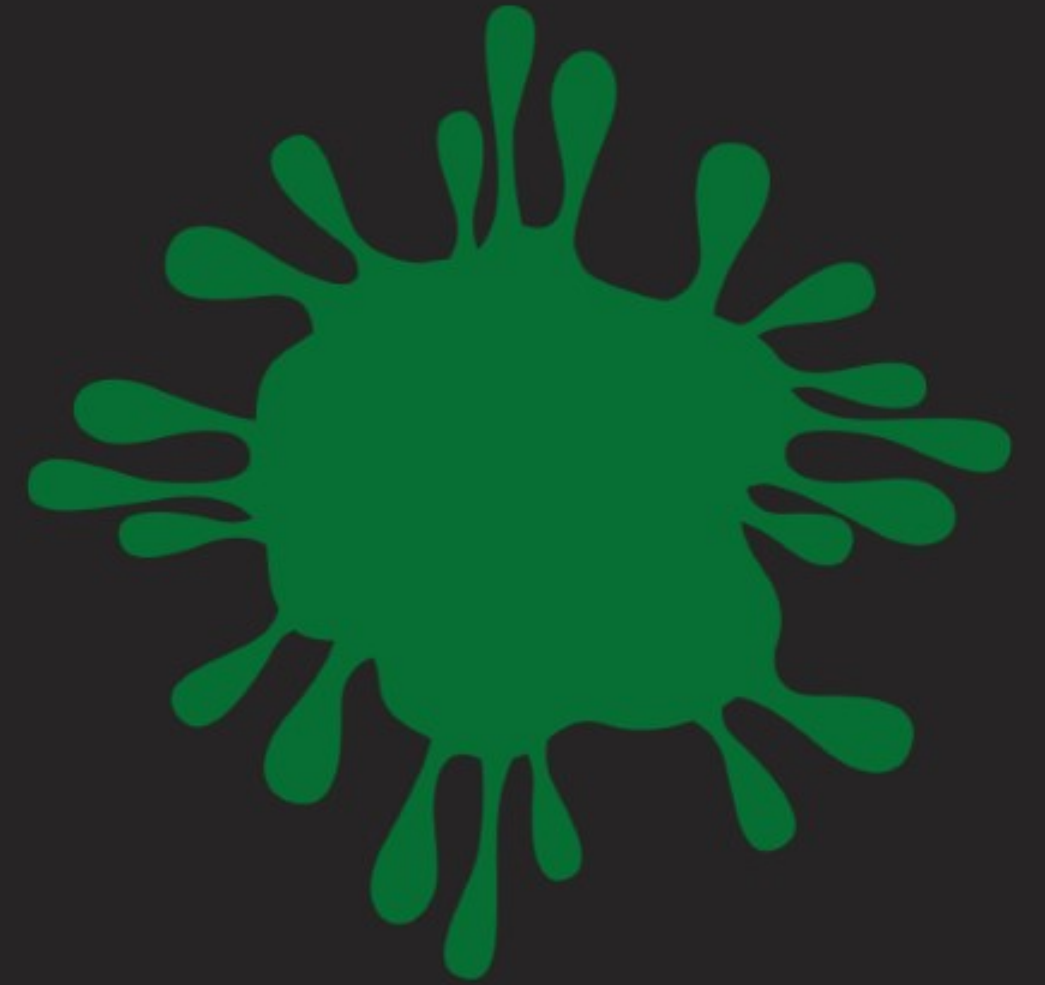




SAM TAMBANI RESEARCH
INSTITUTE



OUR RESPONSE TO CORONA VIRUS(COVID- 19)



Covered Items

A brief outline

Coronavirus (Covid-19)

Safety Protocols

Getting the workplace ready for Covid-19

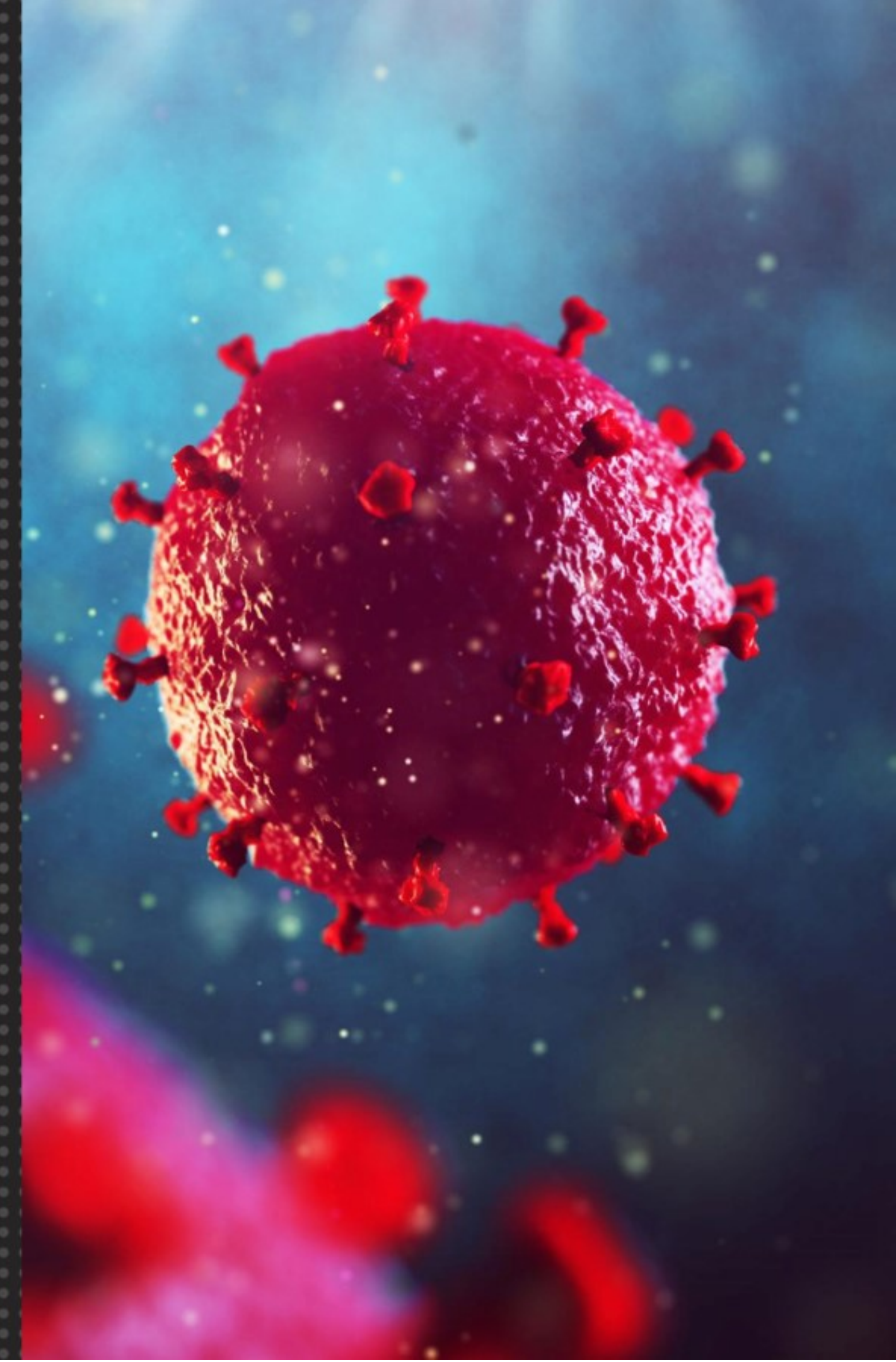
Covid-19 Impact on Socio-economic well being

SATRI Research Projects on Covid-19 impact

Coronavirus

Where we are today

Coronavirus disease (COVID-19) is an infectious disease caused by a newly discovered coronavirus. The COVID-19 virus spreads primarily through droplets of saliva or discharge from the nose when an infected person coughs or sneezes (WHO, 2020). The best way to prevent and slow down transmission is to be well informed about the COVID-19 pandemic and how it spreads. When we are informed, we are able to protect ourselves and others from infection. COVID19 has had a significant impact on every aspect of our lives. We are therefore obliged to play our part in on-going efforts to prevent spread of the infection.





GETTING THE WORKPLACE READY FOR COVID-19

- Make sure the workplaces are clean and hygienic – Surfaces (e.g. desks and tables) and objects
- Promote regular and thorough hand-washing by employees, contractors, and customers by ensuring there is sanitizing hand rub dispensers
- Promote good respiratory hygiene in the workplace
- Keep promoting the message that people need to stay at home even if they have only mild symptoms of COVID-19 – Display posters with this message in your workplaces
- Provide employees with proper Personal Protective Equipment (PPE)
- Consider whether a face-to-face meeting or event is needed or whether it could be replaced by a teleconference or online event

Source: NICD, WHO, Department of Labour.

SATRI COVID-19 RESEARCH

Case studies to establish how the covid-19 lockdown has affected the workers within the mining, energy and construction sectors, and the implications thereof post covid-19 period

1. Have the health and safety measures put in place by companies been effected? To what extent are companies complying with the health and safety regulation. The high number of infected workers reported in the mining sector is it a result of not complying with the health and safety regulations, or other factors?

2. What workplace measures did\have companies put in place during the lockdown and how did\have these affected workers? Some of the measures to consider are:

- Reduced working hours
- Outcomes of and lessons from partial shutdown versus continued operation of mining companies during the lockdown shutdown of companies – For example, was there a difference in compensation between coal miners and miners in the other minerals due to the fact coal miners continued working as had coal mines had to supply coal to Eskom during the lockdown?

SATRI COVID-19 RESEARCH

3. Have the health and safety measures put in place by companies been effected? To what extent are companies complying with the health and safety regulation. The high number of infected workers reported in the mining sector is it a result of not complying with the health and safety regulations, or other factors?

4. Have companies restructured their businesses during the Covid-19 lockdown? If so, to what extent and what is the implication of such restructuring to workers in general and NUM members in particular?

5. What support has mineworkers received during the various lockdown restrictions. How many companies applied for UIF on behalf of workers, and how many companies applied to other covid-19 schemes that were intended to compensate for loss of income?

6. What policy is in place or should be in place in response to the covid-19 for mineworkers from a labour perspective?

SATRI COVID-19 RESEARCH

7. What have been the effects of technology introduced or intensified (whether positive or negative) during covid-19 lockdown period on workers and NUM members in particular?

8. What is SADC and SA government doing in facilitation for the return of mineworkers outside the country to their respective workplaces? Lesson and recommendations.

9. Mining communities and COVID-19 control.

10. Effects of Covid-19 to the mines and implications to the well-being of mineworkers.

11. Adequacy of the Mining and Health and Safety Act of 2009 in protecting workers in the wake of Covid-19 in SA.

**SATRI
OPINION
PIECES ON
COVID-19
ISSUES**

Working from home not feasible for SA, now and in near future by Dr. Martin Kaggwa

Online Link:

<https://www.sowetanlive.co.za/opinion/columnists/2020-05-11-working-from-home-not-feasible-for-sa--now-and-in-near-future/>

Social distancing far from reality by Dr. Martin Kaggwa

Online Link:

<https://www.news24.com/news24/SouthAfrica/Local/Express-News/social-distancing-far-from-reality-20200602>

FOR MORE RELIABLE INFORMATION ON COVID-19 AND UPDATES.

Here are important contact resources in South Africa:

National Department of Health: <http://www.health.gov.za/>

National Institute for Communicable Diseases: <https://www.nicd.ac.za/>

COVID-19 Hotline Number: 0800 029 999

COVID-19 WhatsApp Number: 0600 12 3456

COVID-19 online resources and news portal: <https://sacoronavirus.co.za/>